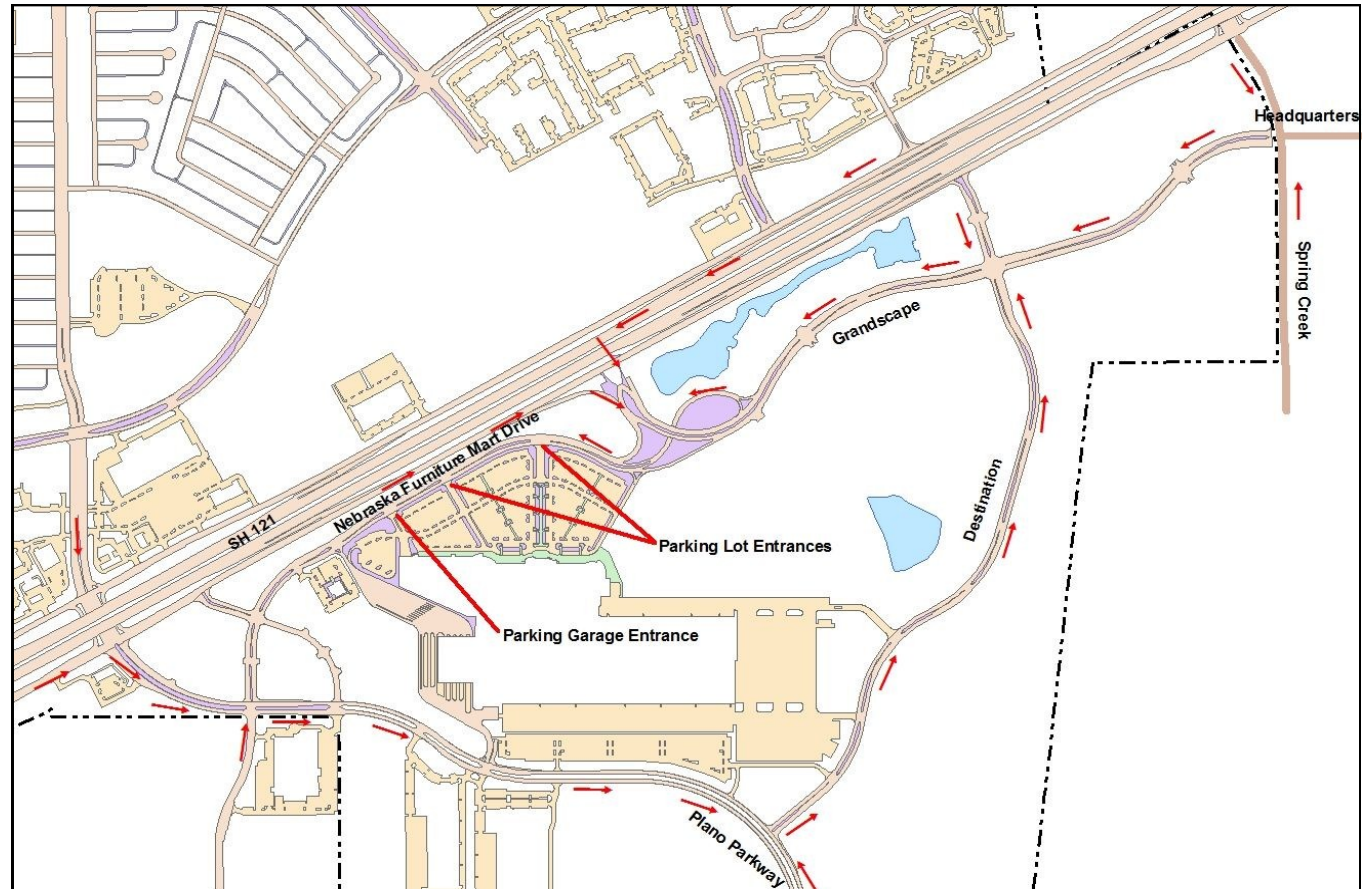


NFM: Getting in and out



Nearly four years in the making, the country's largest home furnishings store and The Colony's largest-ever tourist attraction opened its doors in the spring of 2015. Nebraska Furniture Mart (NFM) is anticipated to bring millions of visitors to the city each year and generate hundreds of millions of dollars in annual sales. In the hopes of mitigating potential traffic inconveniences, a consultant was contracted to develop a Traffic Management Plan. Various lane and road closures are planned for optimal traffic flow both within the development and on surrounding roadways. The map at right illustrates ideal traffic flow patterns. In addition, there are several key points drivers coming from various directions should consider when heading to the store:



- watch for **electronic message boards** and follow instructions directing motorists to preferred entrances and available parking;
- entrances via Bargain Way from northbound SH121 and Plano Parkway may be closed;
- watch for **police officers** at major intersections and **NFM parking staff** directing traffic; and,
- numerous employee-only entrances along Plano Parkway and Destination Drive may be closed so that motorists are channeled around the site to **preferred entrances via Grandscape Boulevard and NFM Drive.**